



Inside This Issue:

Award Winning Design.....	1
Luxury Living.....	2
Potato Scanning.....	2
Bird's Eye View.....	3
Ruby City.....	3
Pick The Pickle.....	4
Anniversaries.....	4
Race Against Cancer.....	4
We Take Safety Seriously.....	5



McNeil Landscape Architecture Creates Award Winning Ecological Design

The Fashion Place Mall, located in the city of Murray, Utah, is a premier shopping destination with anchor stores Nordstrom's, Macy's, and Dillard's, and was recently awarded the 2017 "Murray City Beautification Award", handed out by the local mayor. McNeil Engineering Landscape Architecture and Site Design has been part of the renewal of Fashion Place Mall for the past four years creating a comprehensive landscape plan that included reducing water consumption and creating an innovative site and landscape design that reflects the vibrant community of the Salt Lake Valley.



Fashion Place Mall Landscape

In 2013, the McNeil Landscape Architecture team, led by principal Landscape Architect Scott Schoonover, began partnering with corporate architects of anchor stores Macy's and Dillard's to renovate their surrounding property's creating an ecologically friendly back drop for the mall using aesthetically pleasing water-wise plants, trees and shrubs. The contemporary organic designs ultimately led to setting the tone and character for the entire 10-city block mall campus which was completed this year.

Following the re-design of the anchor's landscaping the mall's parent company, General Growth Properties (GGP), elected to invest the balance of the approximately 1.5 million dollars' total budget to complete the remainder of the campus. This brought the entire 66-acres up-to-date with a low maintenance design that reflects the surrounding landscape of the Wasatch Front including stacked boulders placed to emulate Mt. Olympus and Twin Peaks in the background.

The East plaza re-development along with the 6100 South landscape, which runs the north side of the mall; included retaining walls, accent paving, lighting, site furniture, grading/drainage and irrigation that utilizes the latest techniques and technology to reduce water use while maintaining a beautiful landscape. The boulders used throughout the entire site were selected from Browns Canyon near Park City, transported to the site and placed to symbolize the rugged beauty of Utah's Wasatch Front while creating visual organic sculpture.

Today Fashion Place Mall has "zero" turf or lawn making it maintenance and economically sound with the use of xeric plants and species that are as beautiful and unique as they are drought tolerant. The Fashion Place Mall is an award-winning example of commercial enhancement in Utah using climate appropriate planting and ecologically sound design.



Ted Didas, P.E.
President
801-255-7700 x. 114
ted@mcneileng.com



Scott Schoonover, PLA, ASLA
Principal Landscape Architect
801-255-7700 x. 152
scotts@mcneileng.com

Luxury Living in Downtown Salt Lake City

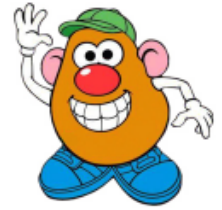
McNeil Engineering has had the privilege of working on several Cowboy Partner projects over the years. One such project is Liberty Crest Apartments located in downtown Salt Lake City. Liberty Crest was recently completed and is now leasing one, two and three bedroom apartments. Developed by Cowboy Partners and designed by Architectural Nexus, Liberty Crest is luxury living in the heart of Salt Lake City. Liberty Crest is a six story 176 unit complex located close to shopping, restaurants and entertainment.



According to Cowboy Partner's website their mission is to create "extraordinary places for people. Widely recognized as one of the premier multi-family and mixed-use developers in the West, Cowboy Partners represents the best in the creation of innovative, imaginative, and inviting residential communities and mixed-use neighborhoods." Liberty Crest is a prime example of Cowboy Partner's mission.

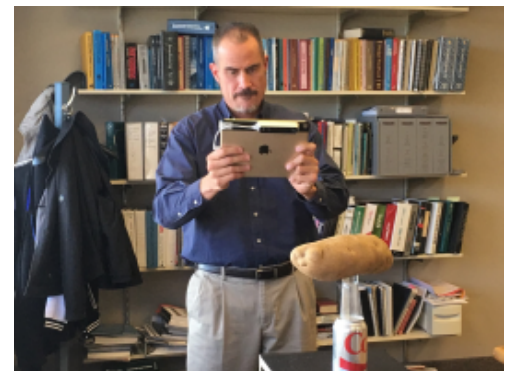
McNeil Engineering's **Civil Engineering Department** completed the civil engineering design for Liberty Crest and the **Survey Department** performed the surveying.

Scanning Mr. Potato Head



You never know what kind of requests we will get here at McNeil Engineering. Our Structural Department got a call from a gentleman asking if we could scan a prize winning potato and create a 3D model for him. Okay, so the potato wasn't Mr. Potato Head, but it was a blue ribbon winner from the State Fair. The potato weighed in at over 5 lbs. The client has a YouTube DIY channel and wants to use ACAD 3D to simulate all the ways the potato can be cut up and cooked so he can most efficiently use all of the potato. Matthew Roblez used the scanner attached to his iPad to complete the scan. This scanner is normally used to scan structural projects to get accurate dimensions.

Matthew Roblez Scanning the Potato



FUN FACT

The Petronas Towers are the tallest twin towers in the world. Located in Kuala Lumpur, Malaysia, the towers stand 1,242 feet tall and consist of 88 floors. The sky bridge located between the 41st and 42nd floors is the highest two-story bridge in the world. Most buildings of extreme height are built with steel skeletons but the cost to import steel into Malaysia made this impractical so the towers were built from concrete (making them twice as heavy and resulting in the need for a double sized base) making them the tallest concrete structures ever built.



A Bird's Eye View...

McNeil Engineering's Survey Department is moving skyward with their new high tech drone.

Drones are everywhere. High priced and low, they're the decade's new toy. If you have one, you flaunt it. If you don't, you want one. Regardless, there's no doubt that they are also really making their presence felt throughout professional and commercial applications.



McNeil Engineering's New Drone

Drones provide invaluable help and cost savings with wide views of inaccessible and otherwise difficult and tough to navigate locations.

So what does adding drone technology to McNeil Engineering's **Survey Department's** arsenal mean? How does this help our clients? Mike Hoffman, PLS, Survey Department Manager, answers these questions. *"As we see it, adding this new high tech service to our currently offered high tech services, provides clients with an additional perspective that cannot be captured any other way."*

Hoffman went on to say, *"we pride ourselves in providing our clients with accurate data through our use of 3D laser scanning. Adding Drone technology is one more way we can provide valuable data to our clients."*

According to Hoffman, he sees drones playing a major role in the following project types performed by McNeil

(Continued on page 5)

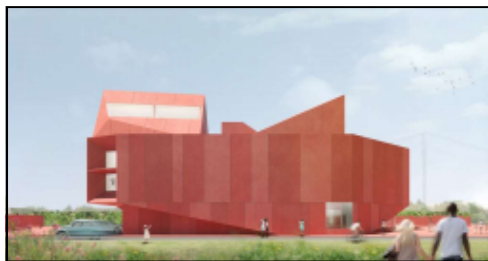
Building "Ruby City"...

"Ruby City," sounds like something out of the Wizard of Oz, but, actually the Linda Pace Foundation is currently in the process of constructing this new building. Ruby City was designed by Adjaye and Associates and is a 14,000 sq. ft. building located on the corner of Camp and South Flores streets in San Antonio, Texas. This new facility will house selections from the foundation's growing collection of more than 800 paintings, sculptures, installations and video works. The new building will be named "Ruby City" and is the dream of the late Linda Pace and the two-story, \$16 million structure will be integrated into the foundation's current campus.



Matthew Roblez on Site Visit to Ruby City in San Antonio, Texas

Linda Pace relied on her dreams as a constant resource for her work. Much of her art, including her many "Dream Drawings," and sculptures such as "Igloo" were originally dream images. Ruby City, also taken from a dream, was one of her last wishes, and it will open to the public in 2018.



Rendering of Ruby City

The largely rectangular building will have a dramatic rooftop of sloping angles and skylights that rise to varying heights and cut-away spaces at the building's base. Inside the lobby of the building, a grand staircase will lead up to a series of three gallery spaces with concrete floors and white walls and ceilings. Totalling 14,000 square feet, Ruby

City will feature 10,000 square feet of exhibition space, with the remaining spaces devoted to administrative offices and storage.

The museum's name, Ruby City, is based on a dream that Linda Pace had, which she sketched and shared with Adjaye during a visit he made to San Antonio in 2007. Pace died of cancer later that year. The exterior of the building will be faced with crimson-hued panels of precast concrete with glass aggregate, giving it a sparkling effect.

McNeil Engineering's **Structural Engineering Department** will be the precast specialty engineer for this project. We are working with long time client and precast fabricator Pretexsa located in Mexico City, Mexico. Matthew Roblez, Structural Department Manager says, *"It truly is a privilege to be working with Pretexsa on this project. We have worked together on other very successful projects."*



Matthew Roblez, SE, SECB
Structural Manager
801-255-7700 x. 128
matt@mcneileng.com

Pick The Pickle!

How do we pick the pickle? Easy, we vote for the Utah Pickle Co Building in the "Vote Your Main Street" campaign so the project will receive a \$150,000 grant towards the restoration of the historic building, located in the Granary District of downtown Salt Lake City. This historic building is located at 741 South 400 West in Salt Lake City.

Click [HERE](#) to vote for the Utah Pickle Company building. Voting goes through October 31st.

The Utah Pickle Building was built back in 1894 and served as a pickle warehouse.



Historic Photo of the Utah Pickle Co.

Ori Media wants to restore the Utah Pickle Co and Hide Building located next door and move their Studio Eleven into this new expanded location. Ori Media has big plans for this restoration project, including event space, office space for local artist, a sound studio and production space, as well as a community garden. **McNeil Engineering's Survey Department** recently completed an ALTA/NSPS Land Title Survey on this site.

You may not be able to control every situation and its outcome, but you can control your attitude and how you deal with it.

hpkyniks.com

Employee Anniversaries this Quarter

Employee	Date Started	Years of Service
Melissa Smith	10/27/1997	20
Carl Greene	10/15/2003	14
Anthony Schmid	12/15/2003	14
Rebeca Rendon-Lira	10/16/2007	10
Daniel Pratt	11/19/2007	10
Daniel Canning	12/16/2013	4
Angie Lee	12/7/2015	2

A Race Against Cancer

McNeil Engineering is proud to support Huntsman Cancer Foundation through a donation to Brian Warner, a Structural Engineer at McNeil Engineering. On September 9th Brian participated in the LoToJa (Logan, Utah to Jackson Hole) bike race to raise funds for cancer research.



With the help of many generous people and companies Brian placed 4th in team fund-

raising with a total of \$2,420 for the fight against cancer. He had lots of fun during the race and as a team placed 4th out of 20 in the 2 man relay category and 27/800 overall for all categories with a time of 10 hours and 07 minutes.



You can imagine just how incredibly scenic, diverse, and challenging the LoToJa's course is. The course gain is around 7,500 feet of elevation. Cyclists tackle most of this while climbing over three mountain passes in the first 110 miles. LoToJa's finish is at the Jackson Hole Mountain Resort. At over 200 miles, the current route, which has been used since 2005, is the longest and most challenging course in the race's 34-year history.

(Continued from page 3)

Engineering:

- Asset Management
- Volumetric Surveys
- ALTA/NSPS Land Title Surveys
- Construction Management

One benefit of using drones for data collection is they reduce the need for workers to enter potentially hazardous areas. Thus providing an additional aspect of safety. Another benefit is the small, portable size of drones make them ideal for collecting data in a variety of different environments that would be hard for traditional means to access.

Drones are not a replacement technology for traditional survey technology.



Aerial Perspective Provided By Drone

They are, however, meant to provide a different visual perspective of a surveyed area. The visual data collected from a drone can be combined with the data collected using other means and technologies to better determine existing conditions and thus make better and more accurate design decisions.

Click [HERE](#) to view McNeil Engineering's drone video



Michael Hoffman, PLS
Survey Manager
801-255-7700 x. 138
mike@mcneileng.com

At McNeil Engineering, We Take Safety Seriously

Here at McNeil Engineering, safety isn't just a concept we strive to achieve, it's our number one priority.

Every day we take steps to protect our employees, clients, and the communities we serve during each phase of our various projects.

We follow all state and federal guidelines and regulations and ensure all of our crew members have the equipment and education they need to stay safe and injury-free while out in the field.

McNeil Engineering survey manager, Mike Hoffman agrees, *"Our success as a company can be attributed to our focus on safety. Clients continue to return to McNeil Engineering because they know we'll not only do the job right but because we never cut corners and never will. We've worked hard to establish our reputation, and are committed to continuing our amazing track record for years to come."*



Award of Merit & Perfect Record Award

This isn't just a hollow promise. It's a commitment that we take seriously. In fact, thanks to our track record of safety-minded work, we were recently recognized by the Utah Safety Council.

Our team members received two awards. The first award is the **2017 Award of Merit** which is *"in recognition and appreciation for achievement in the field of safety and as measured by outstanding safety performance."* The second award is the **2017 Perfect Record Award** which is *"in recognition of completing 12 consecutive months without an OSHA recordable injury, illness, days away from work, or death."*

We are honored to receive these awards, and couldn't be more proud of this achievement.

